

# Self Catering Booking Form



Name:.....  
 Address:.....  
 ..... Postcode .....  
 Telephone: ..... Mobile: .....  
 eMail address .....

Others in Party:  
 1..... 2.....  
 3..... 4.....  
 5..... Pet (type) .....

Please reserve one (If more please specify)

Caravan Holiday Home  
 Maclain Cottage  
 Invercoe Lodge

Are you entitled to the Senior Citizens Discount?  
 (your party must consist entirely of  
 senior citizens (over 65) to qualify)

Arrival Date:..... Departure Date:.....

Payment (Cheques made payable to Invercoe Highland Holidays)

1. Deposit £150 per week.....   
 or 2 Full payment now if less than six weeks till holiday.....

I enclose a cheque/P.O. for ..... or please debit my credit card:

Number:

**Please email "holidays@invercoe.co.uk" with your security number for max security**

Type of card ..... Date of Expiry ..... Issue Number.....

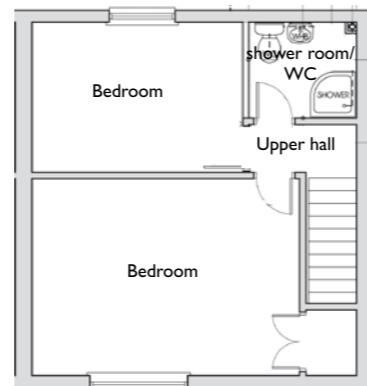
Please note if you are paying your deposit by credit/debit card we will send you an invoice for your balance which will be due six weeks before your holiday.

I have read your Conditions of Hire and agree to abide by them.

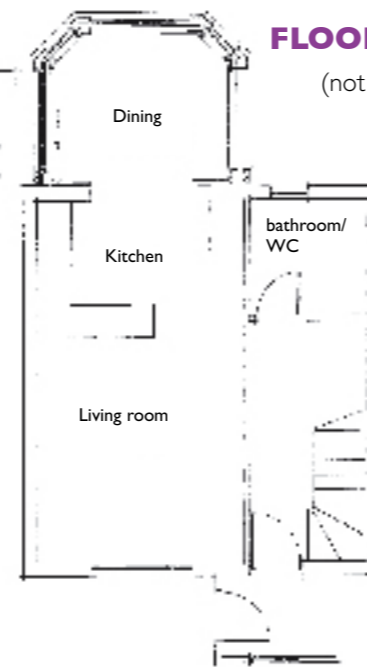
Signature:..... Date:.....

If you have not stayed at Invercoe before, how did you hear about us?

Please return completed booking form to:  
 Invercoe Highland Holidays, Glencoe, Argyll, Scotland PH49 4HP



Caravan Holiday Home



Maclain Cottage

## FLOOR PLANS

(not to scale)



Invercoe Lodge

**Invercoe Highland Holidays**  
**Glencoe, Argyll, Scotland PH49 4HP Telephone/Fax: (01855) 811210**  
**E-mail: holidays@invercoe.co.uk**  
**Website: www.invercoe.co.uk**  
 Proprietors: Iain and Lynn Brown



# NIGHTLY PARK CHARGES 2014

**CARAVAN  
MOTOR HOME  
TRAILER TENT**

**ALL £22.00  
inclusive of  
two people**

**Additional Charges**

£4.00 per extra adult  
 £2.00 per extra child  
 - under 3 years free of charge  
 Extra car £2.00  
 Boat on trailer £2.00  
 Gazebos £2.00 Awnings £2.00  
 Childrens pup tent £2.00  
 Lochside serviced pitches £2.00

**CAMPING**

**Tents (2 persons + car) small £20, medium £22, large £24 (S/M/L - generally 2/4/6 berth, with 9 berth plus incurring a further £2.00 supplement)**

**Backpackers & cyclists £9.00 per person per night  
 Motorcyclists £10.00 per person per night**

We have limited space for extra large tents and will only accommodate them subject to available space.

**HOBBITS**

**£37.00 per night, for two people. Extra adults £5, children £3, pets £3  
 Single occupancy £25**

Senior citizens (over 65) are entitled to a discount of £1.00 per person per night excluding July, August, Bank Holidays & Christmas/New Year periods. One person only in a standard unit would be entitled to a discount of £5.00 per night

American sized motorhomes or large caravans, (eg Hobby etc. by prior arrangement only. During Christmas and New Year holiday periods, the park is open for reservations only, and touring pitches (for which there will be a £3.00 per night surcharge) must be booked in advance of December 15th.

**All prices include VAT at the current rate.**

## Caravan & Camping Park Information

**PITCHING**

On arrival please select your own site (if you have pre-booked please find the warden who will show you to your pitch). The numbered marker is the centre front of your pitch, (ie) park either your caravan jockey wheel on this marker or park/pitch with this marker at the centre front of your motor home or tent.

**PRE-BOOKING**

Please note pre-booking is not normally essential except for peak holiday periods. Bookings can be made online, in writing or by telephone with relevant deposits/payments which are non-refundable upon cancellation or transferable.

**PAYMENT**

Please pay at the shop, to the warden, or in quiet times at the warden's house opposite the park entrance.

**SHOP**

The Shop on the Caravan park will generally be open from early May till late September; stocking most basic groceries and provisions. The shop is available for use by all Invercoe guests.

**TOILET FACILITIES**

In the heated toilet block there are baby-changing facilities, hairdryers and hot showers, and a separate disability toilet/shower room.

**GROUND SHEETS (in awnings)**

We prefer ground sheets not to be used, but if you require to use one it must be lifted daily without exception.

**DOGS**

Are welcome but must be kept on a short lead at all times and exercised outwith the park.

**NOISE/BEHAVIOUR**

Reasonable behaviour is expected at all times and complete quietness is required between 11.00pm and 8.00am

**LAUNDERETTE FACILITIES**

Full launderette with coin-operated washing machines, tumble driers and ironing facilities are provided on the park.

WIFI - Codes available for a small charge

**All pitches must be vacated by mid-day on day of departure.**

# SELF CATERING CHARGES 2014

Dates & Weekly Prices Max allowed in accommodation	Caravan 4	Cottage 4	Lodge 6
26 October - 21 December 2013	-	395	440
21 December - 4 January 2014	-	695	745
4 January - 8 February	-	410	470
8 February - 22 February	-	495	555
22 February - 5 April ***	370	450	510
5 April till 26 April (Easter)	435	520	615
26 April - 24 May	370	430	495
24 May - 31 May (Whitsun)	520	590	685
31 May - 12 July	440	505	590
12 July - 16 August	520	590	685
16 August - 13 September	450	530	620
13 September - 25 October	405	465	565
25 October - 20 December	-	415	460
20 December - 3 January 2014	-	715	765

## Notes.

1 Two people only in any accommodation would be entitled to a discount of £40 on the weekly rates quoted.

2 Parties consisting entirely of senior citizens (over 65) would also be entitled to a discount of £20 on the weekly rates quoted, excluding July and August

3 Fortnight/longer stay bookings receive an extra £20 discount on the second/ subsequent weeks.

4 Note \*\*\* holiday caravans open from 15th March. Caravans have central heating and double glazing.

5 Free WiFi now included in all self catering accommodation, excluding hobbis

**Short Breaks** are available and chargeable at 1/5 (one fifth) of the weekly rates quoted per night (generally for a minimum of three nights) and include all towels, bed linen and gas & electric costs. Pets are chargeable at £5 per pet per night for short breaks.



## Self Catering Accommodation Conditions of Hire

All self catering accommodation is available (letting Saturday-Saturday) at 3.00pm on day of arrival and must be vacated by 9.30am on day of departure.

All our self catering accommodation is cleaned and maintained to a high standard. By accepting the hire of any of our units we fully expect you also to maintain this standard and leave everything as you find it. Any excess untidiness, breakages or damages are chargeable and you will be contacted if this occurs for payment.

The accommodation booked is for the number specified only. No extra members are allowed without the owners permission. Guests are allowed, by prior arrangement and chargeable at a nightly rate of £10.00 per person. Note - any 2 person discounts quoted are not applicable when your holiday includes additional guests.

Pets: one pet per unit may be allowed by prior arrangement and chargeable at £25 per week. Owners must provide suitable bedding and pets must not be left alone at any time or allowed on beds, seats etc. Dogs must be exercised outwith the park area, either in the woods or the foreshore.

No unnecessary noise at any time and especially between the hours of 11.00pm and 8.00am.

Self catering accommodation includes cooker, fridge freezer, microwave, washing machine (cottages & lodges only), colour TV/DVD/video, iron and board (cottages & lodges), shower facilities plus baths in cottages & lodges.

Breakages and deficiencies should be notified to the owners and those caused by the negligence of any party members paid for.

Invercoe is our home as well as our business, which means that any concerns you may have, like where to collect your keys, how to work the cooker etc., are removed because we are here from your arrival till your departure.

**Hire rates are inclusive of all towels and linen, gas, electric and VAT costs where applicable.**

Due to changes in insurance legislation, we no longer offer holiday cancellation insurance, although we strongly advise you to take out your own insurance as we cannot refund any monies upon cancellation.

Please note that whilst every attempt will be made to satisfy specific accommodation requests, we cannot always guarantee to meet these and preference will be given to the earliest bookings.

## Touring Pitch Booking Form



Name: .....

Address: .....

..... Postcode .....

Telephone: ..... Mobile: .....

Please tick box

- Caravan     Motor Home  
 Caravan/Awning                                       Extra large tent - (subject to space 6+ berth)  
 Trailor Tent     Tent                           Hobbit House  
 please tick the box if you require electricity hook-up

Arrival Date:..... Departure Date:..... No of nights:.....

**NOTE:** Bookings can be made through [www.invercoe.co.uk](http://www.invercoe.co.uk). A £30 deposit is required for all bookings except 1 or 2 nights bookings which will be charged/payable in advance at the nightly rate. All deposits are non-refundable or transferable on cancellation.

Vehicle Reg:..... Approx arrival time:.....

**Note:** bookings are only held till 6.00pm unless you advise us of any planned late arrival.

**Payment (Cheques made payable to Invercoe Caravan and Camping Park)**

I wish to pay a £30 deposit to reserve my pitch and understand the balance is to be settled on arrival. For one or two night touring stays the total amount is payable in advance. For the hobbis a £30 deposit will secure your booking with the balance payable 14 days in advance of your stay. Please complete your card details below to authorise payment.

**Please email "holidays@invercoe.co.uk" with your security number for max security**

--	--	--	--	--	--	--	--	--	--	--	--	--	--	--

Type of card ..... Date of Expiry ..... Issue Number.....

Please note we cannot guarantee specific pitches (especially at peak holiday periods) and preference will be given to longer stay bookings.

Signature:..... Date:.....

If you have not stayed at Invercoe before, how did you hear about us?

.....

Please return completed booking form to:  
Invercoe Caravan and Camping Park, Glencoe, Argyll, Scotland PH49 4HP